

Q

"I had a question regarding exporting from TVPAINT

I have a macbook and when I follow all of the required settings, a box pops up when I export that says "Quicktime: Can't Create File".

A If you are getting the error message "Quicktime Can't Create File" that means you still have the previous movie file you exported (by the same name) open in Quicktime .

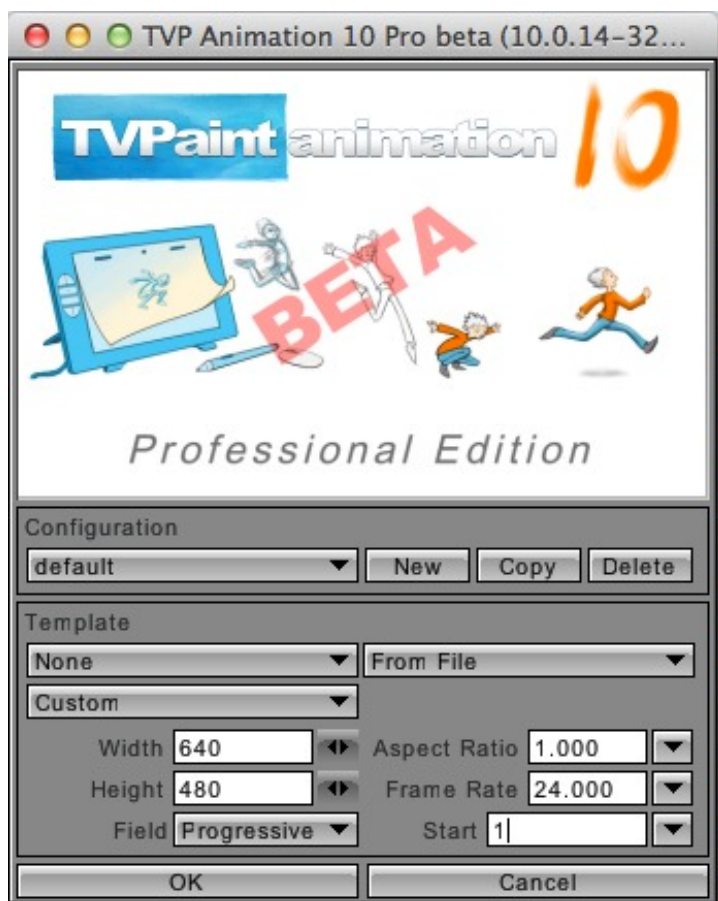
Close the movie and/or quit Quicktime first and then try re-exporting your movie from TVPaint.

Q

The file it would let me export was at 29.97 FPS but not 24 FPS. Is there something I'm doing wrong?

A Be sure that your TVPaint Project is set up at 24 FPS to start with. This can be set when open TVPaint in the START UP PANEL as shown below.

Set the desired size (in this case it's 640 x 480) , Field: Progressive , the pixel aspect ratio should be 1.000 , Frame Rate = 24.000, Start frame = 1 .

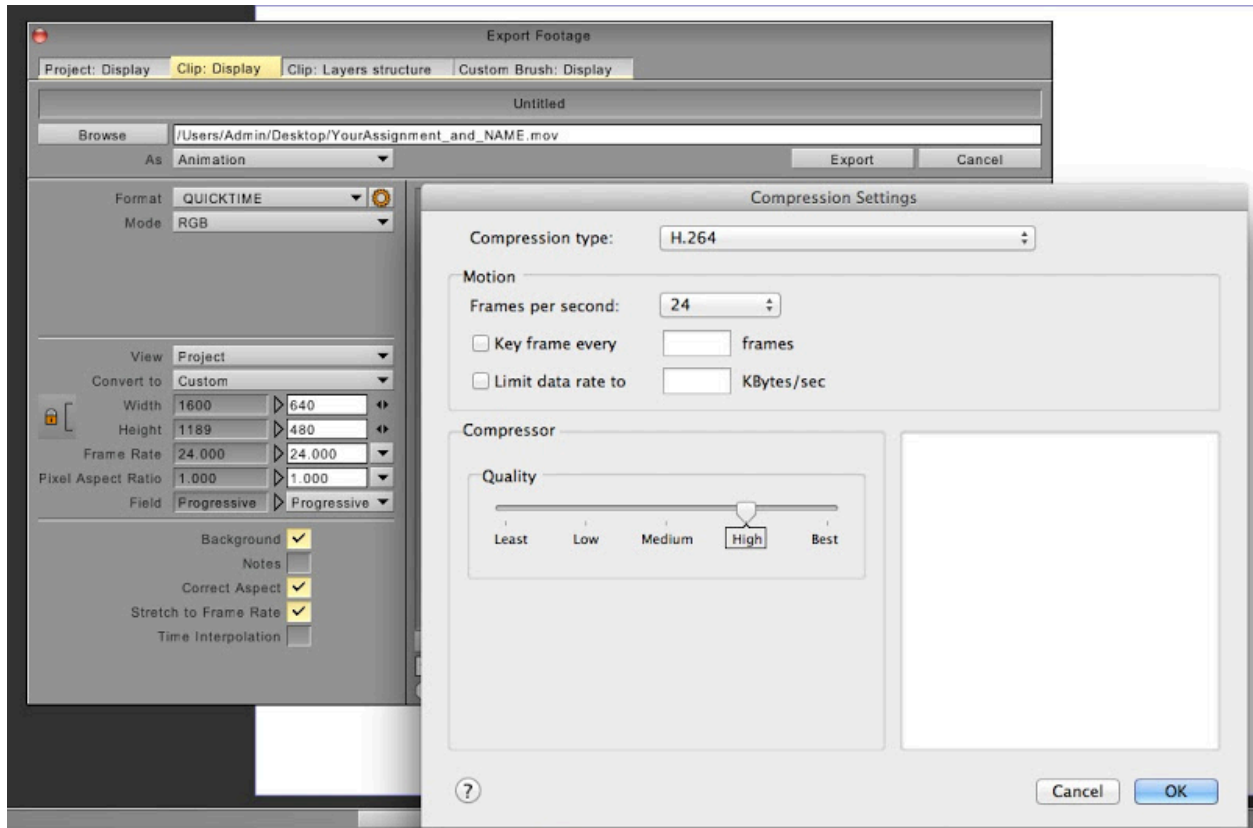


(If your TVPaint doesn't start from the Start-Up Panel each time you launch the program then you can change that by going to

> Edit Menu -- Preferences -- and under the > "StartUp" tab select StartUp Configuration: *OPEN STARTUP PANEL* . and click OK .

ALSO:::::

You also need to be sure that your Export settings are set up exactly as shown:



When you need to export a movie Click on File Menu -- Export To -- and in the Export window set Format: Quicktime , and click on the little orange "GEAR" icon next to Quicktime . Change the Compression type to **H.264** (not the default Animation compression) , Frames Per Second = **24** (not default 30 fps) , **UNCHECK** the box next to "Key Frame Every ___ frames" , and set the quality level to "High" or "Best" , exactly as shown above , then click OK.

If your TVPaint Project is set to 24 FPS and your Export settings are set to H.264 , 24 FPS then the exported movie will be at 24 FPS. (there is no way it can be 29.97 FPS with those exact settings as shown above) .

